



FEED AND FEED ADDITIVES



Who we are?

We are a professional team, which started its official activities in 2019 under the name of NFS YEM KATKI, brought together by experts with at least 16 years of experience in their field, and continues to work devotedly to contribute to the sector.

What we are doing?

In order to differentiate itself in its field, we offer special solutions to farms by providing separate and special technical support to each grower. In order to provide technical support in the most efficient way, farm-specific blood, feces, TMR, etc. We carry out analyses, evaluate the farms and offer the most appropriate solution according to the wishes of the grower and the situation of the farm.





HEALTHY ANIMAL

PRODUCTION

Animal feed and feed additives constitute one of the cornerstones of modern agriculture. These products are used to meet the nutritional needs of animals and support their healthy growth.

Quality animal feed increases the productivity of animals with its content rich in protein, vitamins, minerals and other nutrients. This contributes to food security by increasing the production of meat, milk and other animal products.

In addition, thanks to feed additives, the digestive health and immune system of animals are strengthened, and their resistance to diseases increases.

Therefore, the production of effective and balanced animal feed and the use of feed additives are of great importance for sustainable agriculture and the food chain.

HIGH GAIN

We carry out our production in our facility under the necessary hygiene conditions and deliver it on time as promised.

1

Contact us

Contact us via any of the ways below.
www.nfsyem.com
info@nfsyem.com



2

Analysis

Let us visit you at your place. Let us perform the necessary analyzes and tests and determine the needs of your animals.



3

The Most Suitable Solution

As a result of analysis and tests, let us determine the most suitable feed mixture in line with our suggestions and your demands.



4

Production

Let's start production and deliver your products to your address at the time we promised.



5

After All

Have healthy animals by using our quality products. Make high profits with healthy animals!



PERIOD





R&D In its innovation Leading Company

NFS FEED and FEED ADDITIVE

In today's competitive business world, continuous development and innovation are of great importance in the animal feed and feed additives sector, as in every sector. In this context, as our company, we keep our commitment to "R&D", that is, Research and Development, at the highest level. While R&D forms the basis of how we do business, we aim to constantly improve the quality and effectiveness of the products we offer.

The Importance and Contributions of R&D

It takes steps towards the future of the business world through R&D, innovation and use of advanced technology. As a company, we follow and apply the latest technologies in the production of animal feed and feed additives. The importance of R&D not only ensures that our products are of higher quality, but also helps us develop environmentally friendly and sustainable production processes. In this way, we achieve the best results in animal nutrition and play a leading role by minimizing environmental impacts.

Our R&D Studies

Our company's R&D studies are carried out by experienced experts and researchers. At the heart of innovation is keeping up with the latest trends and scientific developments in animal nutrition. Using this information, we develop specific formulations, resulting in products that better meet the nutritional needs of animals.

Moreover, we focus not only on product quality, but also on our production processes and facilities. While we increase production efficiency through continuous improvement and innovation, we also take important steps in energy saving and waste management.

In Conclusion

Our company stands out with the importance it attaches to R&D in the animal feed and feed additives industry. Constantly staying up to date, following innovations and applying them to our business is the key to our leadership in the industry. While we strive to offer the best products to our customers, we also remain loyal to the principles of environment and sustainability. Thanks to our R&D studies, we will continue to offer quality solutions regarding the health and nutrition of animals.





IN QUALITY LEADING COMPANY

NFS FEED and FEED ADDITIVE

Our company continues to determine the quality standards in the sector and set a new standard with its leading position in the production of animal feed and feed additives. The principles of innovation, meticulousness and sustainability at the center of our production processes reflect our commitment to providing the best products to our customers.

The Importance and Contributions of Production

Production processes are one of the main factors that determine the quality, reliability and effectiveness of our products. We know that production not only creates the physical structure of a product, but also affects important factors such as animal welfare, nutrition and environmental impacts. In line with this knowledge and experience, we work meticulously at every stage of our production processes without compromising quality.

Our Production Works

Our company's production work is carried out using the latest technologies in the industry. Our expert teams ensure the highest level of consistency by performing stringent quality control and testing at every stage of our products. Our production facilities are designed in accordance with hygiene standards, allowing us to produce safe and healthy products.

Continuous improvement and innovation form the basis of our production processes. Our research and development teams work to develop more effective and efficient production methods. This allows us to optimize resource use while providing better quality products to our customers.

In Conclusion

Production is the cornerstone of our company and reflects our commitment to raising our quality standards. By combining the principles of innovation, quality and sustainability, we play a leading role in the animal feed and feed additives industry. We will continue to minimize environmental impacts and identify industry best practices while providing the highest quality products to our customers. The success of our production work is our greatest source of motivation to strengthen customer satisfaction and trust in the sector.





RUMINANT

They are mammals with a special digestive system structure. Thanks to this digestive system, they can digest foods that are difficult to digest, such as fibrous plant material, more effectively.

Representatives of ruminants include animals such as cattle, sheep, goats, deer, wild sheep, and camels. These animals generally consume plant material through grazing, and thanks to this special digestive system, they obtain the digested food more efficiently.



PRIMAL VM

Supports vitamin and mineral needs of calves, lambs and kids.

The herbal extracts contained in it relieve the respiratory tract of animals, reduce the incidence of pneumonia and play a role in the preservation of intestinal integrity.

MOS-B Glucan and organic minerals are easily absorbed from the intestines, helping the bacterial flora to develop healthily and quickly, and helping animals to be more resistant to diseases.

Technological additives reduce the incidence of diarrhea. Thanks to the aromatic components it contains, it increases the appetite of the animals and provides more daily live weight gain.

Contents			
			(In 2KG)
Vitamin A	Retnyl Acetate (1000 IU)	3000000	IU
Vitamin D3	Cholecalciferol (500 IU)	1000000	IU
Vitamin E	α-Tocopheryl Acetate %50	10000	Mg
Vitamin C	Ascorbic acid %100	11250	Mg
Vitamin K3	Menadione Sodium Bisulphite %51	2040	Mg
Vitamin B1	Thiamine %100	2000	Mg
Vitamin B2	Riboflavin %80	2400	Mg
Vitamin B6	Pyridoxine %100	2500	Mg
Vitamin B12	Cyanocobalamin %1	10	Mg
Vitamin B3	Niacinamide %100	10000	Mg
Vitamin B5	Calcium-D-pantothenate %98	5000	Mg
Vitamin B7	Biotin %2	40	Mg
Mangan	Mangan Oxide %62	12500	Mg
Ferrous	Ferrous Sulphate %31	12500	Mg
Zinc	Zinc Oxide %72	12500	Mg
Copper	Copper Sulphate %25	2500	Mg
Iodate	Calcium Iodate %62	125	Mg
Cobalt	Cobalt Carbonate %5	50	Mg
Selenium	Sodium Selenite %4,5	125	Mg
Organic Zinc	Glycine Chelated Zinc %26	5200	Mg
Antioxidant	Butylated Hydroxytoluene	10000	Mg
Herbal Extract	NefeSily M.	100000	Mg
Autolyze Yeast	Inactive Yeast	200000	Mg
Flavour	T.Furitti Flavour	10000	Mg
MCP	Mono Calcium Phosphate	100000	Mg
Herbal Extract	Algumin	50000	Mg
Herbal Extract	Pulmo CX	150000	Mg
Carrier	Calcium Carbonate	QSP	





CALM DOWN

It is specially formulated to meet the vitamin and mineral needs of beef animals.

Thanks to the live yeast and herbal extracts it contains, it increases the rate of feed utilization.

It has aromatic and appetizing properties.

It provides a reduction in the amount of heat.

Contents			
(In 2 KG)			
Choline	Choline chloride %60	600	Mg
Mangan	Mangan Oxide %62	250	Mg
Ferrous	Ferrous Sulphate %31	250	Mg
Zinc	Zinc Oxide %72	250	Mg
Copper	Copper Sulphate %25	50	Mg
Iodate	Calcium Iodate %62	2,5	Mg
Cobalt	Cobalt Carbonate %5	1	Mg
Selenium	Sodium Selenite %4,5	2,5	Mg
Herbal Extract	Herb D.	105.000	Mg
Herbal Extract	NefeSily M.	1.000	Mg
Yucca	Yucca Schidigera	500	Mg
Carrier	Calcium Carbonate	QSP	





NFS FEEDING CONCENTRATE

Increases feed utilization of livestock, accelerates body growth, and improves cellulose digestion.

Optimum meat yield is achieved by preventing inflammation of the mouth, tongue and digestive mucous membranes with vitamins, organic-inorganic minerals.

With the buffers it contains, it reduces the pressure in the rumen and provides digestion at more stable pH values.

Minimizes the risk of toxins with MOS-B Glucan and binders.

Contents			
			(In 1KG)
Vitamin A	Retnlyl Acetate (1000 IU)	40.000	IU
Vitamin D3	Cholecalciferol (500 IU)	13.000	IU
Vitamin E	α-Tocopheryl Acetate %50	132	Mg
Vitamin B3	Niacinamide %100	4.000	Mg
Vitamin B7	Biotin %2	7	Mg
Mangan	Mangan Oxide %62	250	Mg
Ferrous	Ferrous Sulphate %31	250	Mg
Zinc	Zinc Oxide %72	250	Mg
Copper	Copper Sulphate %25	50	Mg
Iodate	Calcium Iodate %62	2,5	Mg
Cobalt	Cobalt Carbonate %5	1	Mg
Selenium	Sodium Selenite %4,5	2,5	Mg
Organic Mangan	Glysine Chelated Mangan %22	88	Mg
Organic Ferrous	Glysine Chelated Ferrous %22	90	Mg
Organic Zinc	Glysine Chelated Zinc %26	165	Mg
Organic Copper	Glysine Chelated Copper %24	88	Mg
Organic Selenium	L-Selenemetonine %0,2	0,3	Mg
Herbal Extract	NefeSily M.	4.000	Mg
Live Yeast	Saccharomyces Cerevisiae	5x10*10	Cfu
Autolyze Yeast	Inactive Yeast	100.000	Mg
Soda	Sodium Bicarbonate	300.000	Mg
Magnesium	Magnesium Oxide	250.000	Mg
Binder	Bentonite-Montmorillonit	75.000	Mg
Binder	Kliniptilolite	50.000	Mg
Binder	Sepiolite	50.000	Mg
Carrier	Calcium Carbonate	QSP	



NFS HERA DUST

It is an animal feed additive premix that increases the heat of the animals in cases where there is no timely pregnancy or incomplete pregnancy in small and large cattle.

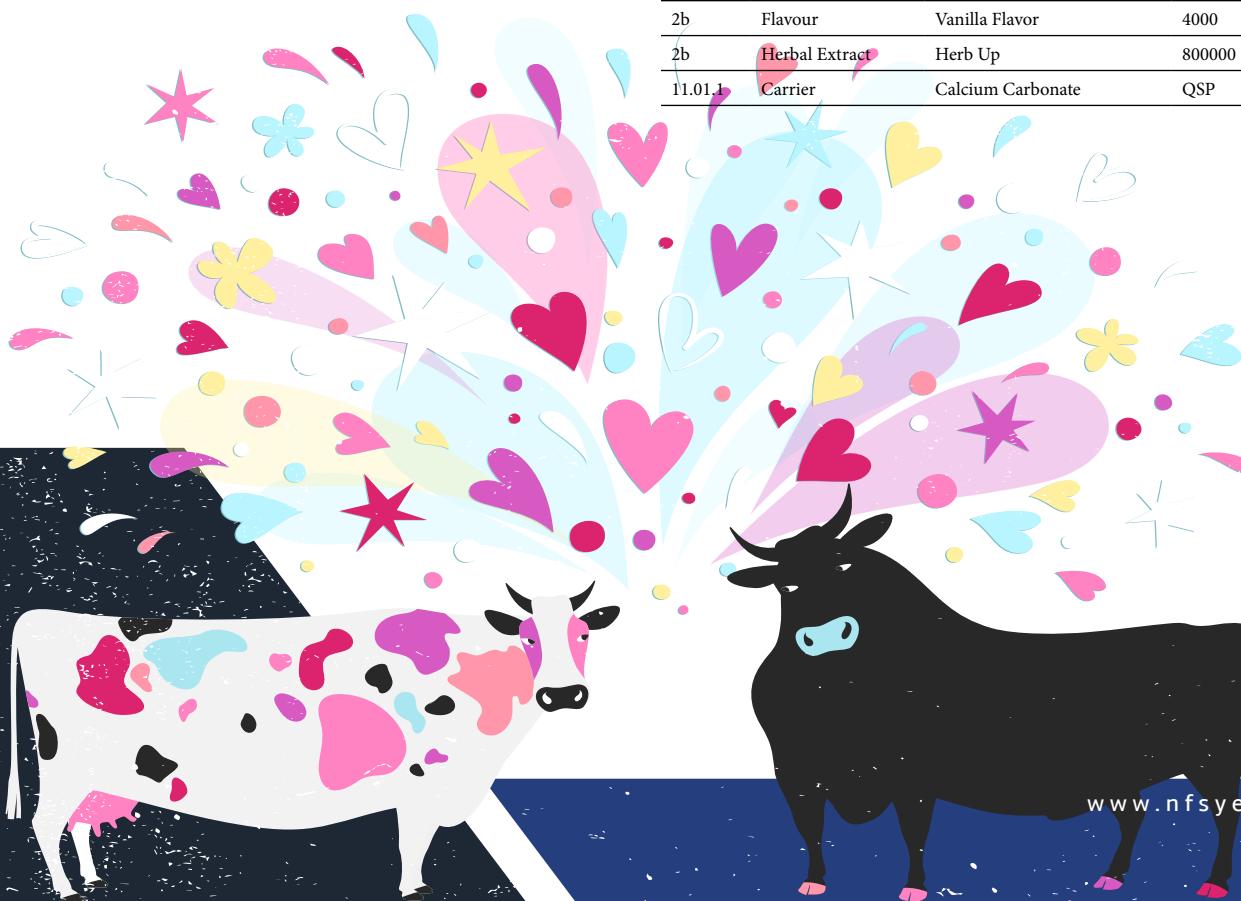
It ensures fertilization in the animal and positively affects the fertilization process.

It does not contain any chemicals and is completely natural.

It does not affect the natural structure of your animals and improves fertility positively.

In addition, its positive effects include increasing milk yield and contributing to the development processes of animals.

Contents				
(In 1KG)				
3a672a	Vitamin A	Retnlyl Acetate (1000 IU)	1500000	IU
3a671	Vitamin D3	Cholecalciferol (500 IU)	500000	IU
3a700	Vitamin E	α-Tocopheryl Acetate %50	5000	Mg
3a890	Choline	Choline chloride %60	3000	Mg
3b502	Mangan	Mangan Oxide %62	2500	Mg
3b103	Ferrous	Ferrous Sulphate %31	2500	Mg
3b603	Zinc	Zinc Oxide %72	2500	Mg
3b405	Copper	Copper Sulphate %25	500	Mg
3b202	Iodate	Calcium Iodate %62	25	Mg
3b305	Cobalt	Cobalt Carbonate %5	10	Mg
3b801	Selenium	Sodium Selenite %4,5	25	Mg
3b815	Organic Selenium	L-Selenemetonine %0,2	18	Mg
E321	Antioxidant	Butylated Hydroxytoluene	1000	Mg
2b	Herbal Extract	NefeSily M	5000	Mg
2b	Flavour	Vanilla Flavor	4000	Mg
2b	Herbal Extract	Herb Up	800000	Mg
11.01.1	Carrier	Calcium Carbonate	QSP	



**WE PRODUCE
IN TURKIYE**

**WE EXPORT TO MANY
PLACES IN THE WORLD**





NFS BUFFER ALG

Rapidly fermenting carbohydrate sources are ingredients such as feeds containing high starch content or easily digestible sugars. As such carbohydrates are rapidly fermented, large amounts of short-chain fatty acids and gas formation can occur. This can lead to a rapid production of acid in the rumen, which can cause the rumen pH to drop rapidly. Sudden pH changes can overwhelm the ability of rumen microorganisms to maintain balance and disrupt the normal functioning of the digestive system.

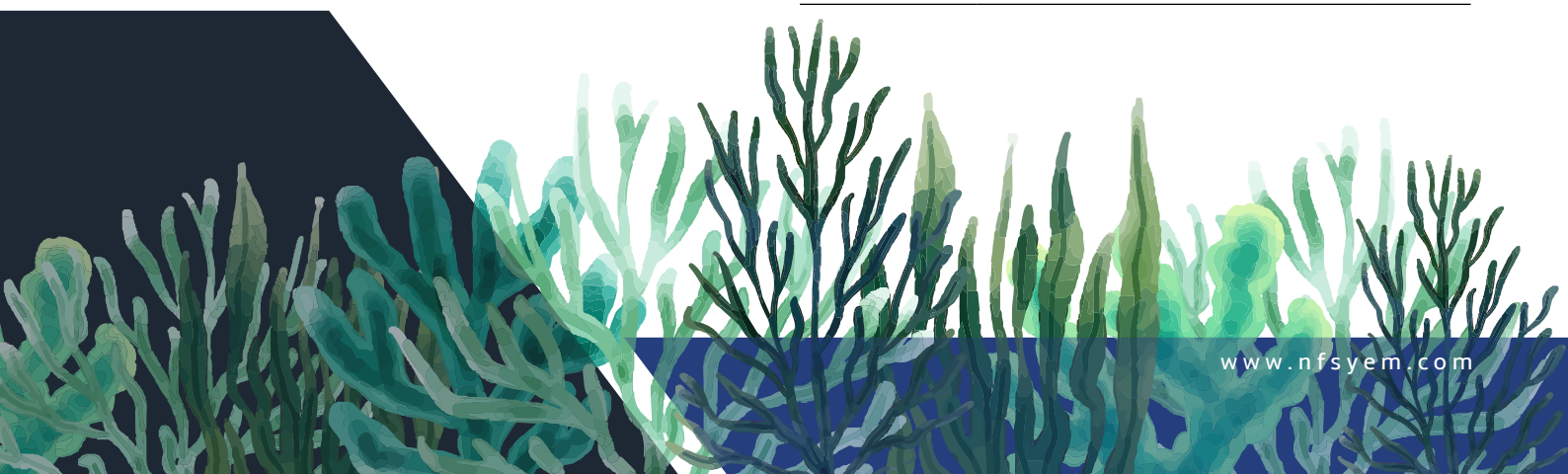
Low rumen pH (acidity) can negatively affect rumen microorganisms, which can affect the animal's digestive system and lead to health problems. Acid accumulation can also damage the rumen wall, which can negatively affect the overall health of the animal.

Therefore, nutrition and feeding programs of ruminant animals must be carefully managed to maintain rumen pH balance. It is important to use fast-fermenting carbohydrate sources in a controlled manner and adjust feeding programs in accordance with rumen health.

Our product named NFS BUFFER ALG provides more stable feed consumption and productivity by eliminating the negative effects of sudden pH changes in the rumen dynamics of rapidly fermenting carbohydrate sources in ruminant animals.

Thanks to the different effectiveness periods of the buffering substances it contains, it ensures that the rumen remains balanced for a long time.

Contents			
(In 1KG)			
Herbal Extract	NefeSily M.	1.500	Mg
Soda	Sodium Bicarbonate	480.000	Mg
Magnesium	Magnesium Oxide	240.000	Mg
Sea Alg	Lithothamnium Calcerium	150.000	Mg
Carrier	Calcium Carbonate	QSP	





NFS MILK CONCENTRATE

In dairy farms, in order to maintain sustainable productivity and ensure profitability; A healthy herd, high quantity and quality milk production and high fertility success are the most basic principles.

Mixed feed analyzes made in our enterprises; As a result of metabolic profile results and observations, the special needs of the enterprises are determined.

It is our product aiming at high efficiency, containing vitamins, organic, inorganic minerals, active-inactive yeast cultures, protein and energy sources, buffering and toxin binder.

Contents			
			(In 1KG)
Vitamin A	Retnlyl Acetate (1000 IU)	300.000	IU
Vitamin D3	Cholecalciferol (500 IU)	120.000	IU
Vitamin E	α-Tocopheryl Acetate %50	500	Mg
Vitamin B3	Niacinamide %100	500	Mg
Mangan	Mangan Oxide %62	750	Mg
Ferrous	Ferrous Sulphate %31	750	Mg
Zinc	Zinc Oxide %72	750	Mg
Copper	Copper Sulphate %25	150	Mg
Iodate	Calcium Iodate %62	7,5	Mg
Cobalt	Cobalt Carbonate %5	3	Mg
Selenium	Sodium Selenite %4,5	7,5	Mg
Organic Mangan	Glysine Chelated Mangan %22	44	Mg
Organic Ferrous	Glysine Chelated Ferrous %22	66	Mg
Organic Zinc	Glysine Chelated Zinc %26	78	Mg
Organic Selenium	L-Selenemetonine %0,2	2	Mg
Herbal Extract	NefeSily M.	1.000	Mg
Live Yeast	Saccharomyces Cerevisiae	3x10 ¹⁰	Cfu
Autolyze Yeast	Inactive Yeast	10.000	Mg
Nfs-N	Slow Release NPN	350.000	Mg
Soda	Sodium Bicarbonate	125.000	Mg
Magnesium	Magnesium Oxide	100.000	Mg
Binder	Bentonite-Montmorillonit	67.000	Mg
Binder	Kliniptilolite	34.000	Mg
Binder	Sepiolite	34.000	Mg
Carrier	Calcium Carbonate	QSP	



NFS HEPAGUARD PLUS

Liver damage in dairy and livestock animals can be caused by various factors;

Foodborne Toxins: Toxins found in the feed that animals eat can affect liver functions.

Chemicals and Medicines: Pesticides, veterinary medicines and other chemicals can affect liver functions.

Stress: Stress situations experienced in animals can cause the secretion of stress hormones such as cortisol. These hormones can have negative effects on the liver in case of long-term exposure.

Nutritional Disorders: Unbalanced or inadequate nutrition can affect the liver health of animals.

Microorganisms: Diseases caused by bacteria or other microorganisms can cause liver damage. Some bacterial infections, in particular, can cause inflammation and damage to the liver.

Feeding Changes: Sudden and major feed changes to animals can put pressure on the digestive system and therefore the liver.

Symptoms of liver damage can often manifest as loss of appetite, weight loss, digestive problems, and color changes.

NFS HEPAGUARD PLUS

Dairy and livestock; transfers, toxins and stress from feed, etc. It is our product that we recommend to be used at certain intervals as a support in the repair of liver damage caused by various causes. It will support the liver enzymes to remain at the desired levels with the protected choline, protected amino acids and herbal extracts in its content.



Contents			
(In 1KG)			
Methionine	Coated Methionine %50	300.000,00	Mg
Choline	Coated Choline %25	50.000,00	Mg
Herbal Extract	NefeSily M.	50.000	Mg
Autolyze Yeast	Inactive Yeast	150.000	Mg



NFS KECI VM

It is a feed additive created with high levels of vitamin E, antioxidant, selenium, herbal extract and organic selenium.

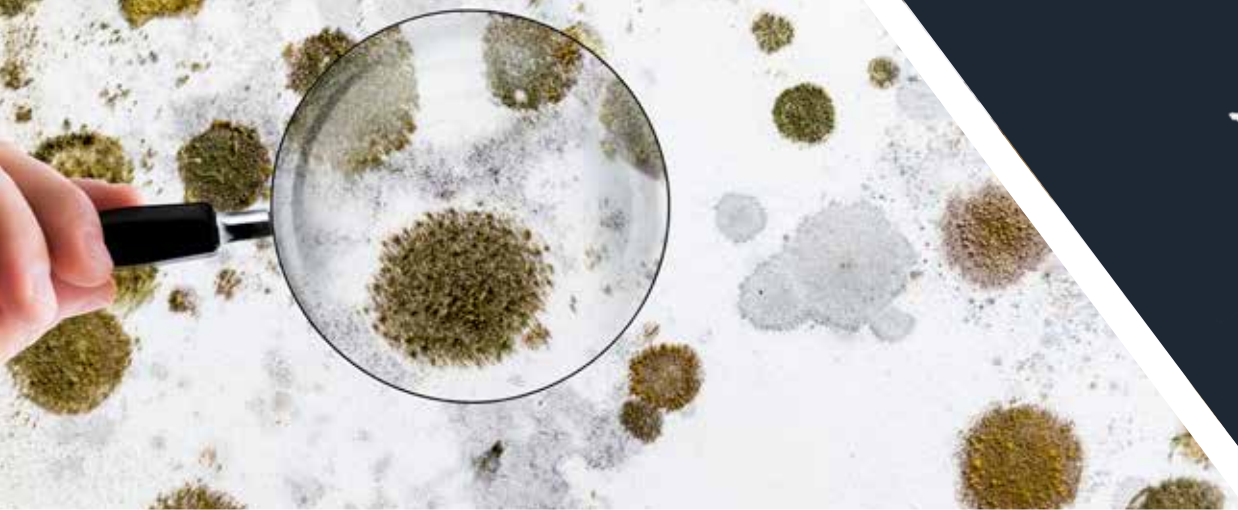
Since it provides improvement in the quality and quantity of sperm in goats, an increase in twin or multiple pregnancy rates is observed.

Increases body resistance. It reduces heat stress. It prevents foot problems. Improves rumen health and digestive efficiency.

It protects the liver and reproductive system by contributing to the elimination of toxins.

Contents			
			(In 1KG)
Vitamin A	Retnol Acetate (1000 IU)	13.000.000	IU
Vitamin D3	Cholecalciferol (500 IU)	2.600.000	IU
Vitamin E	α-Tocopheryl Acetate %50	17.500	Mg
Vitamin B1	Thiamine %100	750	Mg
Vitamin B2	Riboflavin %80	2.500	Mg
Vitamin B6	Pyridoxine %100	200	Mg
Vitamin B3	Niacinamide %100	30.000	Mg
Vitamin B7	Biotin %2	120	Mg
Mangan	Mangan Oxide %62	50.000	Mg
Ferrous	Ferrous Sulphate 30%	50.000	Mg
Zinc	Zinc Oxide %72	50.000	Mg
Iodate	Calcium Iodate %62	800	Mg
Cobalt	Cobalt Sulphate 20%	150	Mg
Selenium	Sodium Selenite %4,5	150	Mg
Antioxidant	Butylated Hydroxytoluene	1.000	Mg
Live Yeast	Saccharomyces Cerevisiae	14x10 ¹¹	Cfu
MCP	Mono Calcium Phosphate	823.000	Mg
Soda	Sodium Bicarbonate	100.000	Mg
Magnesium	Magnesium Oxide	200.000	Mg
NaCl	Sodium Chloride	195.000	Mg
Binder	Kliniptilolite	800.000	Mg
Carrier	Calcium Carbonate	QSP	





NFS TOX

NFS TOX

It is a toxin binder containing aluminosilicate to reduce the toxin risk of ruminant animals. It can be used in a protective dose in case of minimal toxin suspicions.

NFS ULTRA TOX

It eliminates the synergistic effects of toxins with MOS-B Glucan, herbal extract and aluminosilicate against medium and high level toxins in ruminant and poultry enterprises, feed factories. It supports the immune system and liver functions and ensures detoxification and inactivation of mycotoxins. It helps to solve health, reproduction and yield problems in businesses.

NFS ULTRA TOX PLUS

Containing MOS-B Glucan, herbal extract and aluminosilicate against medium and high level toxins in ruminant and poultry enterprises, feed factories; It ensures detoxification and inactivation of mycotoxins by eliminating the synergistic effects of toxins, increasing health, reproduction and efficiency activities, supporting the immune system and liver functions.

Contents (NFS TOX)

(In 1KG)

Herbal Extract	NefeSily M.	10.000	Mg
Autolyze Yeast	Inactive Yeast	150.000	Mg
Binder	Bentonite-Mont-morillonit	600.000	Mg
Binder	Kliniptilolite	120.000	Mg
Binder	Sepiolite	120.000	Mg

Contents (NFS ULTRA TOX)

(In 1KG)

Herbal Extract	NefeSily M.	25.000	Mg
Autolyze Yeast	Inactive Yeast	375.000	Mg
Binder	Bentonite-Mont-morillonit	300.000	Mg
Binder	Kliniptilolite	150.000	Mg
Binder	Sepiolite	150.000	Mg

Contents (NFS ULTRA TOX PLUS)

(In 1KG)

Herbal Extract	NefeSily M.	25.000	Mg
Autolyze Yeast	Inactive Yeast	475.000	Mg
Binder	Bentonite-Mont-morillonit	300.000	Mg
Binder	Kliniptilolite	100.000	Mg
Binder	Sepiolite	100.000	Mg



PEKERING VM

Calves, lambs and kids need special nutrition to grow and develop healthily. However, these young animals may sometimes experience diarrhea during the feeding period with milk or calf food.

PEKERING VM calves, lambs and kids; It provides maximum protection by increasing body resistance against diarrhea cases during feeding periods with milk or calf food.

It helps protect against dehydration by reducing the amount of liquid excreted in feces with the natural fibers it contains.

It helps balance body electrolyte levels and improve blood values in animals exposed to stress after loss of water and minerals from the body.

Contents			
			(In 1KG)
Vitamin A	Retnvl Acetate (1000 IU)	25500	IU
Vitamin D3	Cholecalciferol (500 IU)	5500	IU
Vitamin E	α-Tocopheryl Acetate %50	60	Mg
Vitamin B3	Niacinamide	4	Mg
Vitamin B5	Calcium D Pantothenate	3	Mg
Vitamin K3	Menadione	40	Mcg
Vitamin B1	Thiamine %100	500	Mcg
Vitamin B2	Riboflavin %80	600	Mcg
Sodium		55000	Mg
Potassium		20000	Mg
Magnesium		2000	Mg
Ferrous	Ferrous Sulphate %31	8	Mg
Zinc	Zinc Oxide %72	55	Mg
Copper	Copper Sulphate %25	12	Mg
Iodate	Calcium Iodate %62	0,1	Mg
Chloride		350	Mg
Mangan	Mangan Oxide %62	40	Mg
Vitamin B6	Pyridoxine %100	400	Mcg
Vitamin B7	Biotin %2	100	Mcg
Vitamin B9	Folic Acid	70	Mcg
Vitamin B12	Cyanocobalamin %1	1	Mcg
Vitamin C	Ascorbic acid %100	65	Mg
Selenium	Sodium Selenite %4,5	510	Mcg
Phosphorous		5000	Mg
Calcium		450	Mg





NFS BLACK LAMB

Vitamins are organic compounds that play important roles in the metabolic processes of animals.

Minerals are inorganic compounds that are necessary for the healthy bone structure, nerve functions and metabolic processes of animals.

Small cattle fed with milk and food need the correct balance of vitamins and minerals for healthy growth and development.

“Nfs Black Lamb” is a vitamin and mineral supplement of small ruminants fed with milk or food.

It meets their needs, strengthens the immune system and helps them grow healthier.

Contents			
			(In 1KG)
Vitamin A	Retnvl Acetate (1000 IU)	750.000	IU
Vitamin D3	Cholecalciferol (500 IU)	250.000	IU
Vitamin E	α-Tocopheryl Acetate %50	2.500	Mg
Vitamin B3	Niacinamide %100	10.000	Mg
Vitamin B7	Biotin %2	120	Mg
Choline	Choline chloride %60	18.000	Mg
Mangan	Mangan Oxide %62	2.500	Mg
Ferrous	Ferrous Sulphate 30%	2.500	Mg
Zinc	Zinc Oxide %72	2.500	Mg
Copper	Copper Sulphate %25	500	Mg
Iodate	Calcium Iodate %62	25	Mg
Cobalt	Cobalt Sulphate 20%	10	Mg
Selenium	Sodium Selenite %4,5	25	Mg
Organic Mangan	Glysine Chelated Mangan %22	1.800	Mg
Organic Ferrous	Glysine Chelated Ferrous %22	2.400	Mg
Organic Zinc	Glysine Chelated Zinc %26	3.000	Mg
Organic Copper	Glysine Chelated Copper %24	1.200,00	Mg
Organic Selenium	L-Selenemetionine %0,2	180	Mg
Herbal Extract	NefeSily M.	3.000	Mg
Live Yeast	Saccharomyces Cerevisiae	10x10*10	Cfu
Autolyze Yeast	Inactive Yeast	10.000	Mg
MCP	Mono Calcium Phosphate	75.000	Mg
Soda	Sodium Bicarbonate	10.000	Mg
Magnesium	Magnesium Oxide	40.000	Mg
NaCl	Sodium Chloride	50.000	Mg
Binder	Bentonite-Montmorillonit	150.000	Mg
Binder	Kliniptilolite	120.000	Mg
Carrier	Calcium Carbonate	QSP	



NFS OPTISACC

A healthy feeding regime is of great importance for ruminant animals. Providing adequate amounts of quality feed and grass ensures that animals receive the nutrients they need.

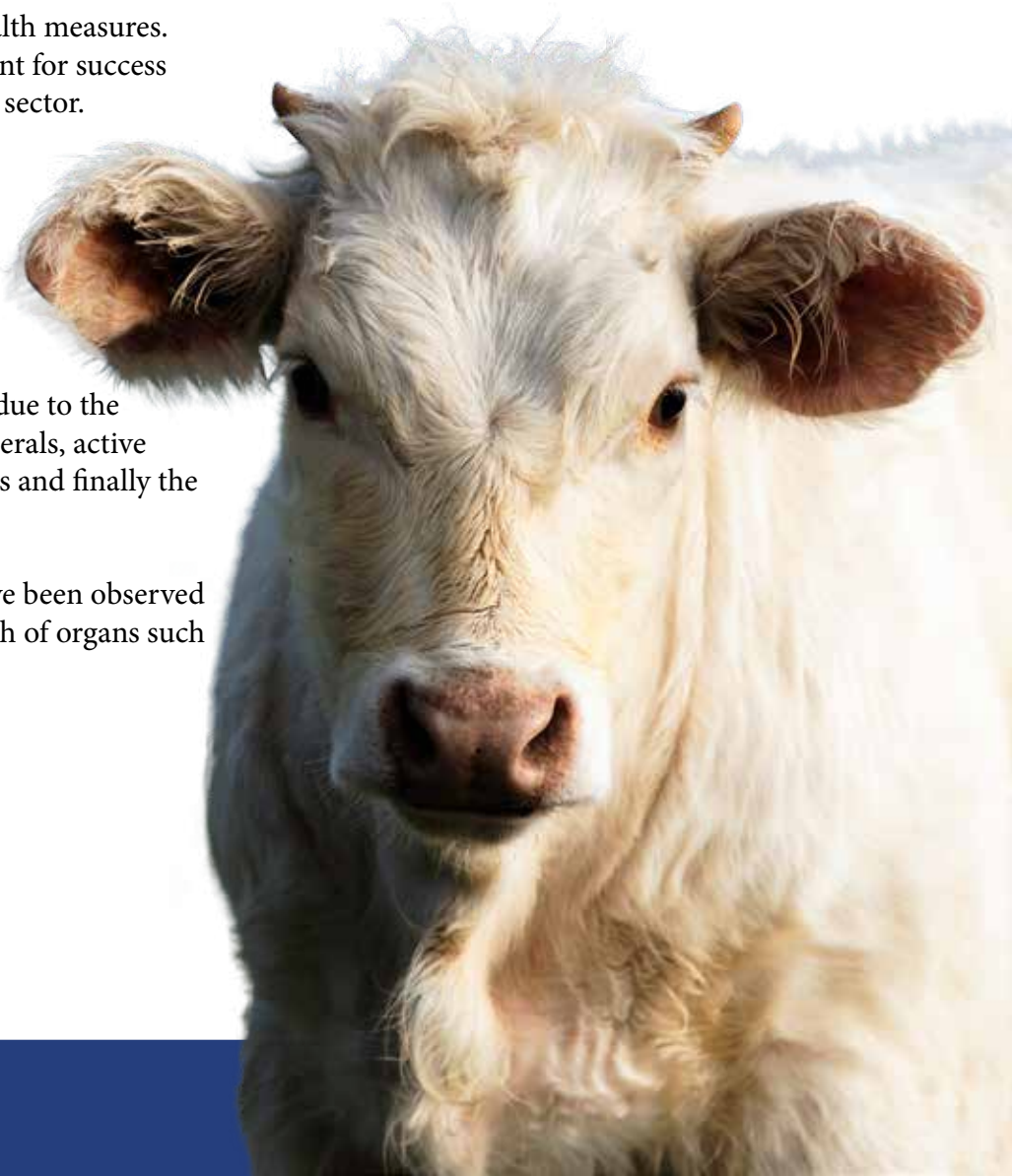
Healthy growth, increased productivity and sustainable success in fertility for ruminant animals require careful management and health measures. Considering these factors is important for success and sustainability in the agricultural sector.

Our NFS Optisacc support product plays an important role in making ruminant animals healthier, increasing productivity and sustainable success in fertility.

It is a product with protective value due to the vitamins, organic and inorganic minerals, active and inactive yeast cultures it contains and finally the toxin binder it contains.

With regular use, positive effects have been observed on the immune system and the health of organs such as the liver.

Contents			
			(In 1KG)
Live Yeast	Saccharomyces Cerevisiae	35x10 ¹⁰	Cfu
Autolyze Yeast	Inactive Yeast	100.000	Mg
Carrier	Calcium Carbonate	QSP	





NFS SHEEP POWER/N

Two products have been formulated to meet the needs of sheep.

It has a rich content of vitamins, minerals, live yeast, toxin binders, moss, B glucan and herbal extracts.

In the product with N, ammonium salts are added in addition to the first one in order to relax the urinary tract and prevent obstruction.

Contents			
			(In 10Kg)
Vitamin A	Retnlyl Acetate (1000 IU)	750.000	IU
Vitamin D3	Cholecalciferol (500 IU)	250.000	IU
Vitamin E	α-Tocopheryl Acetate %50	2.500	Mg
Vitamin B3	Niacinamide %100	10.000	Mg
Vitamin B7	Biotin %2	120	Mg
Choline	Choline chloride %60	18.000	Mg
Mangan	Mangan Oxide %62	2.500,00	Mg
Ferrous	Ferrous Sulphate %31	2.500,00	Mg
Zinc	Zinc Oxide %72	2.500,00	Mg
Copper	Copper Sulphate %25	500	Mg
Iodate	Calcium Iodate %62	25	Mg
Cobalt	Cobalt Carbonate %5	10	Mg
Selenium	Sodium Selenite %4,5	25	Mg
Organic Mangan	Glycine Chelated Mangan %22	1.800	Mg
Organic Ferrous	Glycine Chelated Ferrous %22	2.400	Mg
Organic Zinc	Glycine Chelated Zinc %26	3.000	Mg
Organic Copper	Glycine Chelated Copper %24	1.200,00	Mg
Organic Selenium	L-Selenemetonine %0,2	180	Mg
Herbal Extract	NefeSily M.	3.000	Mg
Live Yeast	Saccharomyces Cerevisiae	10x10*10	Cfu
Autolyze Yeast	Inactive Yeast	9.375	Mg
MCP	Mono Calcium Phosphate	75.000	Mg
Soda	Sodium Bicarbonate	10.000	Mg
Magnesium	Magnesium Oxide	40.000	Mg
Amonyum Chloride	Ammonium chloride	1.000.000	Mg
NaCl	Sodium Chloride	50.000	Mg
Binder	Bentonite-Montmorillonit	112.500	Mg
Binder	Kliniptilolite	102.857	Mg
Binder	Sepiolite	55.268	Mg
Carrier	Calcium Carbonate	QSP	



NFS ECO VM

It is our product containing vitamins, inorganic minerals, active-inactive yeast culture, produced to meet the vitamin and mineral needs of ruminant animals.

It has a protective effect when the toxin risk is at medium or low risk.

Contents			
			(In 10KG)
Vitamin A	Retnyl Acetate (1000 IU)	4.500.000	IU
Vitamin D3	Cholecalciferol (500 IU)	1.500.000	IU
Vitamin E	α-Tocopheryl Acetate %50	1.500	Mg
Vitamin B1	Thiamine %100	100	Mg
Vitamin B3	Niacinamide %100	500	Mg
Vitamin B7	Biotin %2	10	Mg
Mangan	Mangan Oxide %62	1.500	Mg
Ferrous	Ferrous Sulphate 30%	2.100	Mg
Zinc	Zinc Oxide %72	3.600	Mg
Copper	Copper Sulphate %25	750	Mg
Iodate	Calcium Iodate %62	305	Mg
Cobalt	Cobalt Sulphate 20%	210	Mg
Selenium	Sodium Selenite %4,5	90	Mg
Live Yeast	Saccharomyces Cerevisiae	2,5x10 ¹⁰	Cfu
NaCl	Sodium Chloride	20.000	Mg
Carrier	Calcium Carbonate	QSP	



RINGOMILK

Calves, lambs and kids; It is a delicious and easy-to-digest milk replacer with balanced content produced to meet the needs from colostrum feeding until weaning period.

Thanks to its optimized formula, it encourages a healthier, faster and stronger growth, resulting in more productive herds.

It can be used safely in robotic feeding programs, thanks to milk proteins and vegetable oils that show high absorption depending on the production technique and raw materials used.

It provides less health problems and more daily live weight gain with the fatty acids, essential oils and technological additives in it.

NFS RINGOMILK 21

Raw Protein	%21.0
Raw Fat	%16.0
Raw Fiber	%0.50
Raw Ash	%6.20
Ca	0,007
Na	0,004
P	0,004

NFS RINGOMILK 22

Raw Protein	%22.0
Raw Fat	%16.0
Raw Fiber	%0.10
Raw Ash	%5.42
Ca	0,0086
Na	0,0048
P	0,0042

NFS RINGOMILK 23

Raw Protein	%23.0
Raw Fat	%16.0
Raw Fiber	%0.10
Raw Ash	%4.92
Ca	0,0096
Na	0,0054
P	0,0047



NFS DRY CONCENTRATE

In the dry period and close up phases, which are the most important phases of the cycle in dairy enterprises; It is our blend product that will support a healthy calving, protection of the liver and minimal postpartum metabolic problems.

With the organic minerals in its content, it positively affects the health of the offspring, improves the quality of colostrum and supports the formation of quality follicles during the insemination period.

Improvement of postpartum feed consumption supports reaching the upper level of milk yield early and maintaining the productivity regularly.

Contents			
			(In 1KG)
Vitamin A	Retnlyl Acetate (1000 IU)	675.000	IU
Vitamin D3	Cholecalciferol (500 IU)	135.000	IU
Vitamin E	α-Tocopheryl Acetate %50	2.500	Mg
Choline	Choline chloride %60	29.250	Mg
Mangan	Mangan Oxide %62	2.250,00	Mg
Ferrous	Ferrous Sulphate %31	2.250,00	Mg
Zinc	Zinc Oxide %72	2.250,00	Mg
Copper	Copper Sulphate %25	450	Mg
Iodate	Calcium Iodate %62	22,5	Mg
Cobalt	Cobalt Carbonate %5	9	Mg
Selenium	Sodium Selenite %4,5	22,5	Mg
Organic Mangan	Glycine Chelated Mangan %22	1.350	Mg
Organic Ferrous	Glycine Chelated Ferrous %22	1.800	Mg
Organic Zinc	Glycine Chelated Zinc %26	2.250	Mg
Organic Copper	Glycine Chelated Copper %24	900	Mg
Organic Selenium	L-Selenemetonine %0,2	25	Mg
Live Yeast	Saccharomyces Cerevisiae	1x10 ¹⁰	Cfu
Magnesium	Magnesium Oxide	100.000	Mg
Amonyum Chloride	Ammonium chloride	400.000	Mg
Binder	Kliniptilolite	65.520	Mg
Binder	Aktif Karbon	100.000	Mg
Carrier	Calcium Carbonate	QSP	



NFS RINGO BLOCK

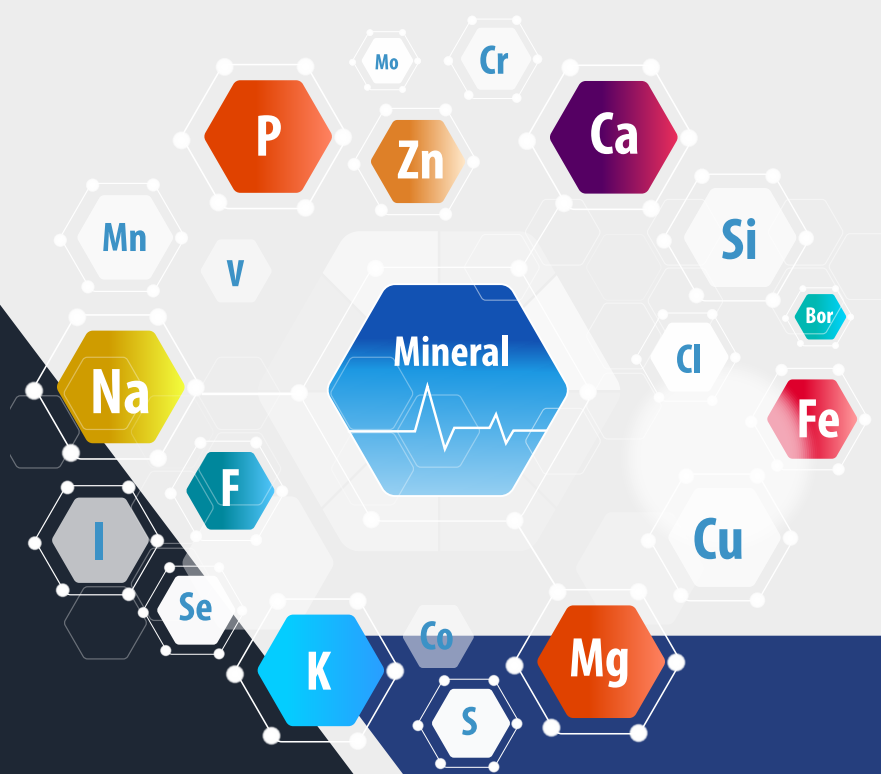
It meets the vitamin and mineral needs of beef cattle, dairy cows, calves, sheep, lambs, goats and kids.

It prevents behaviors related to mineral deficiency such as eating soil, paper, and licking walls. It contributes to development and live weight gain in beef cattle and increased productivity in dairy cattle.

It helps reduce the occurrence of foot, nail and skin problems of all animal groups.

The mentioned animals obtain vitamins and minerals by licking.

Contents			
(In 1KG)			
Vitamin A	Retnol Acetate (1000 IU)	50.000	IU
Vitamin D3	Cholecalciferol (500 IU)	12.500	IU
Vitamin E	α-Tocopheryl Acetate %50	100	Mg
Mangan	Mangan Oxide %62	500,00	Mg
Ferrous	Ferrous Sulphate %31	500,00	Mg
Zinc	Zinc Oxide %72	500,00	Mg
Copper	Copper Sulphate %25	100	Mg
Iodate	Calcium Iodate %62	5	Mg
Cobalt	Cobalt Carbonate %5	2	Mg
Selenium	Sodium Selenite %4,5	5	Mg
Phosphate	Di Calcium Phosphate	680	Mg





NFS LICKING BLOCK

Nfs Licking Block licking blocks are produced specifically for the needs of all animal species.

We focus on the health of your animals with our quality and natural licking stones.

These special stones help your animals meet their daily salt, vitamin and mineral needs.

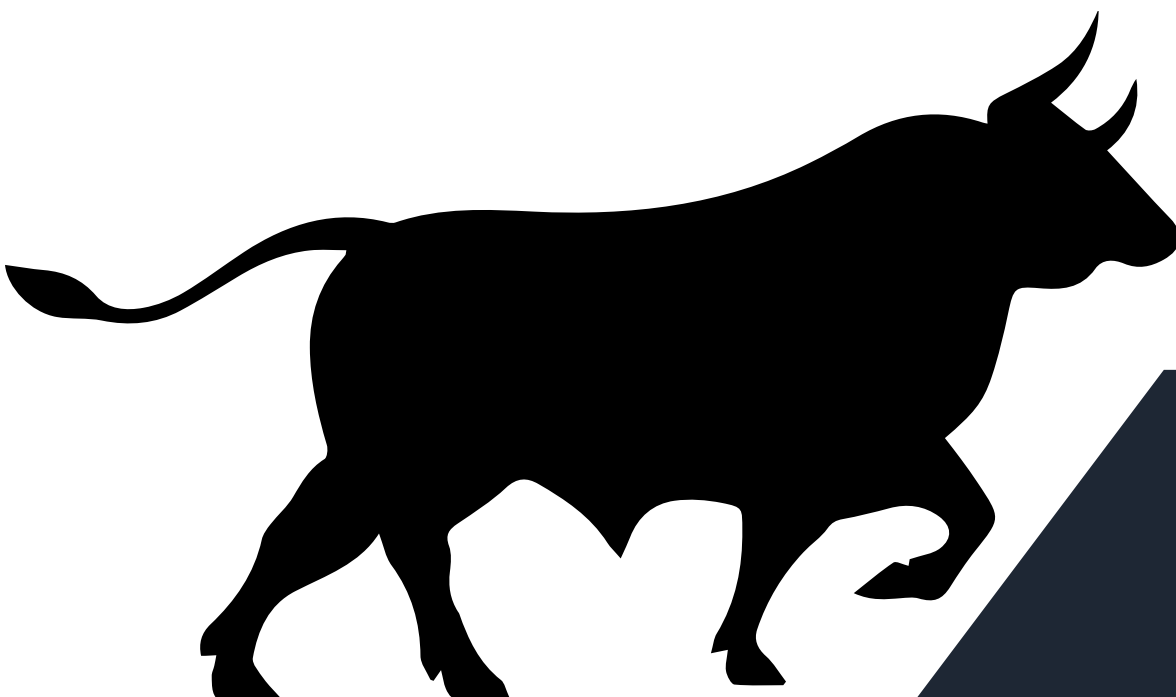
Supplemented with natural minerals, these licking stones promote bone health, increase coat shine and increase overall energy levels.

It may also help prevent health problems by strengthening the immune system.

Our product is produced with materials obtained from environmentally friendly and natural resources. It does not contain any additives or chemicals.

It offers all the essential nutrients your pet needs, thus helping them live a healthy life. These licking stones, which are a treasure for both you and your animals, contribute to their healthy and happy lives.

Choose the right product to meet your pet's nutritional needs and support their health. Contribute to their happiness and health with these unique licking stones offered by nature.





Poultry

Poultry is a group of domestic animals that usually includes birds such as chickens, ducks, turkeys and geese.

These animals are widely raised for meat and egg production. Chickens are one of the most common poultry for meat and egg production. Ducks are found in aquatic habitats as well as meat and egg production. Turkeys are great meat providers. Geese are also raised for meat production and for their oily skin. Poultry plays an important role in nutrition and economy.



NFS ULTRA TOX PLUS

Containing MOS-B Glucan, herbal extract and aluminosilicate against medium and high level toxins in ruminant and poultry enterprises, feed factories; It ensures detoxification and inactivation of mycotoxins by eliminating the synergistic effects of toxins, increasing health, reproduction and efficiency activities, supporting the immune system and liver functions.

Contents			
			(In 1KG)
Herbal Extract	NefeSily M.	25.000	Mg
Autolyze Yeast	Inactive Yeast	475.000	Mg
Binder	Bentonite-Montmorillonit	300.000	Mg
Binder	Kliniptilolite	100.000	Mg
Binder	Sepiolite	100.000	Mg



NFS BRO VM

It is a specially formulated feed additive to meet the needs of broiler hens during the starting, growing and finishing stages.

Thanks to the vitamins-minerals, toxin binders, enzymes, herbal extracts and intestinal regulators in its content, it improves the rate of feed utilization by encouraging animals to grow healthier.

Thanks to healthy growth and low feed conversion ratio (FCR), it provides more live weight gain per day.



NFS BRO VM

Contents

(In 15KG)

		starter		grower		finisher	
Vitamin A	Retnyl Acetate (1000 IU)	14000000	IU	12000000	IU	11000000	IU
Vitamin D3	Cholecalciferol (500 IU)	5500000	IU	5000000	IU	4500000	IU
Vitamin E	α -Tocopheryl Acetate %50	85000	Mg	70000	Mg	60000	Mg
Vitamin K3	Menadione Sodium Bisulphite %51	3200	Mg	3000	Mg	2200	Mg
Vitamin B1	Thiamine %100	3200	Mg	2500	Mg	2200	Mg
Vitamin B2	Riboflavin %80	8600	Mg	6500	Mg	5400	Mg
Vitamin B6	Pyridoxine %100	5400	Mg	4300	Mg	3200	Mg
Vitamin B12	Cyanocobalamin %1	17	Mg	17	Mg	11	Mg
Vitamin B3	Niacinamide %100	65000	Mg	60000	Mg	45000	Mg
Vitamin B5	Calcium-D-pantothenate %98	20000	Mg	18000	Mg	15000	Mg
Vitamin B9	Folic Acid	2235	Mg	1935	Mg	1645	Mg
Vitamin B7	Biotin %2	300	Mg	250	Mg	200	Mg
Choline	Choline chloride %60	300000	Mg	300000	Mg	300000	Mg
Mangan	Mangan Oxide %62	120000	Mg	120000	Mg	120000	Mg
Ferrous	Ferrous Sulphate %31	20000	Mg	20000	Mg	20000	Mg
Zinc	Zinc Oxide %72	110000	Mg	110000	Mg	110000	Mg
Copper	Copper Sulphate %25	15600	Mg	15600	Mg	15600	Mg
Iodate	Calcium Iodate %62	1270	Mg	1270	Mg	1270	Mg
Selenium	Sodium Selenite %4,5	300	Mg	300	Mg	300	Mg
Methionine	DL Methionine	4350000	Mg	4100000	Mg	4000000	Mg
Lysine	L Lysine HCL	3800000	Mg	3700000	Mg	4100000	Mg
Threonine		1950000	Mg	1900000	Mg	1900000	Mg
Antioxidant	Butylated Hydroxytoluene	10000	Mg	10000	Mg	10000	Mg
Optiphos	Optiphos X20	27000	Mg	27000	Mg	27000	Mg
Hostazym	Hostazym 60K	32500	Mg	32500	Mg	32500	Mg
Inactive Yeast	Inactive Yeast	500000	Mg	500000	Mg	500000	Mg
Binder	Nfs UltraTox	1000000	Mg	1000000	Mg	1000000	Mg
Carrier	Calcium Carbonate	QSP		QSP		QSP	



NFS YUMI VM

It is a feed additive specially formulated to meet the needs of laying hens during chick, pullet and laying periods.

Thanks to the vitamin-mineral, toxin binder, enzyme, herbal extract, intestinal regulator and technological additives it contains, it encourages animals to grow healthy and makes them more resistant to diseases.

A decrease is observed in the amount of broken-dirty eggs and the mortality rate of poultry.

It makes the egg yolk more vivid and dark.

It increases the weight of the egg and provides more egg performance.



NFS YUMI VM

		L1 (In 15KG)		D3 (In 6KG)		V2 (In 5KG)	
Vitamin A	Retnyl Acetate (1000 IU)	12000000	IU	10000000	IU	5000000	IU
Vitamin D3	Cholecalciferol (500 IU)	2400000	IU	3000000	IU	1500000	IU
Vitamin E	α-Tocopheryl Acetate %50	25000	Mg	20000	Mg	10000	Mg
Vitamin C	Ascorbic acid %100	50000	Mg				
Vitamin K3	Menadione Sodium Bisulphite %51	3000	Mg	3000	Mg	1500	Mg
Vitamin B1	Thiamine %100	2500	Mg	1000	Mg	500	Mg
Vitamin B2	Riboflavin %80	6000	Mg	4000	Mg	2000	Mg
Vitamin B6	Pyridoxine %100	5000	Mg	3000	Mg	1500	Mg
Vitamin B12	Cyanocobalamin %1	15	Mg	15	Mg	7	Mg
Vitamin B3	Niacinamide %100	25000	Mg	30000	Mg	15000	Mg
Vitamin B5	Calcium-D-pantothenate %98	8000	Mg	10000	Mg	5000	Mg
Vitamin B9	Folic Acid	1000	Mg	500	Mg	250	Mg
Vitamin B7	Biotin %2	20	Mg	50	Mg	25	Mg
Choline	Choline chloride %60	125000	Mg	300000	Mg	350000	Mg
Karofil Kırmızı	Astaxanthin %10	4000	Mg	1500	Mg		
Karofil Sarı	Canthaxanthin %10	1000	Mg	2500	Mg		
Mangan	Mangan Oxide %62	80000	Mg	100000	Mg	50000	Mg
Ferrous	Ferrous Sulphate %31	80000	Mg	25000	Mg	12000	Mg
Zinc	Zinc Oxide %72	60000	Mg	60000	Mg	30000	Mg
Copper	Copper Sulphate %25	5000	Mg	5000	Mg	2500	Mg
Iodate	Calcium Iodate %62	1000	Mg	500	Mg	250	Mg
Cobalt	Cobalt Carbonate %5	200	Mg	100	Mg	50	Mg
Selenium	Sodium Selenite %4,5	150	Mg	200	Mg	100	Mg
Methionine	DL Methionine	1000000	Mg	1500000	Mg	500000	Mg
Lysine	L Lysine HCL	800000	Mg	1000000	Mg	400000	Mg
Antioxidant	Butylated Hydroxytoluene	10000	Mg	10000	Mg	5000	Mg
Nfs-Sal		1000000	Mg				
Optiphos	Optiphos X20	12500	Mg	12500	Mg	6000	Mg
Hostazym	Hostazym 60K	30000	Mg	30000	Mg	14000	Mg
Inactive Yeast	Inactive Yeast	500000	Mg	200000	Mg		
MCP	Mono Calcium Phosphate	7000000	Mg				
Soda	Sodium Bicarbonate	1000000	Mg				
Binder	Nfs UltraTox	1000000	Mg	1000000	Mg		
Carrier	Calcium Carbonate	QSP		QSP		QSP	



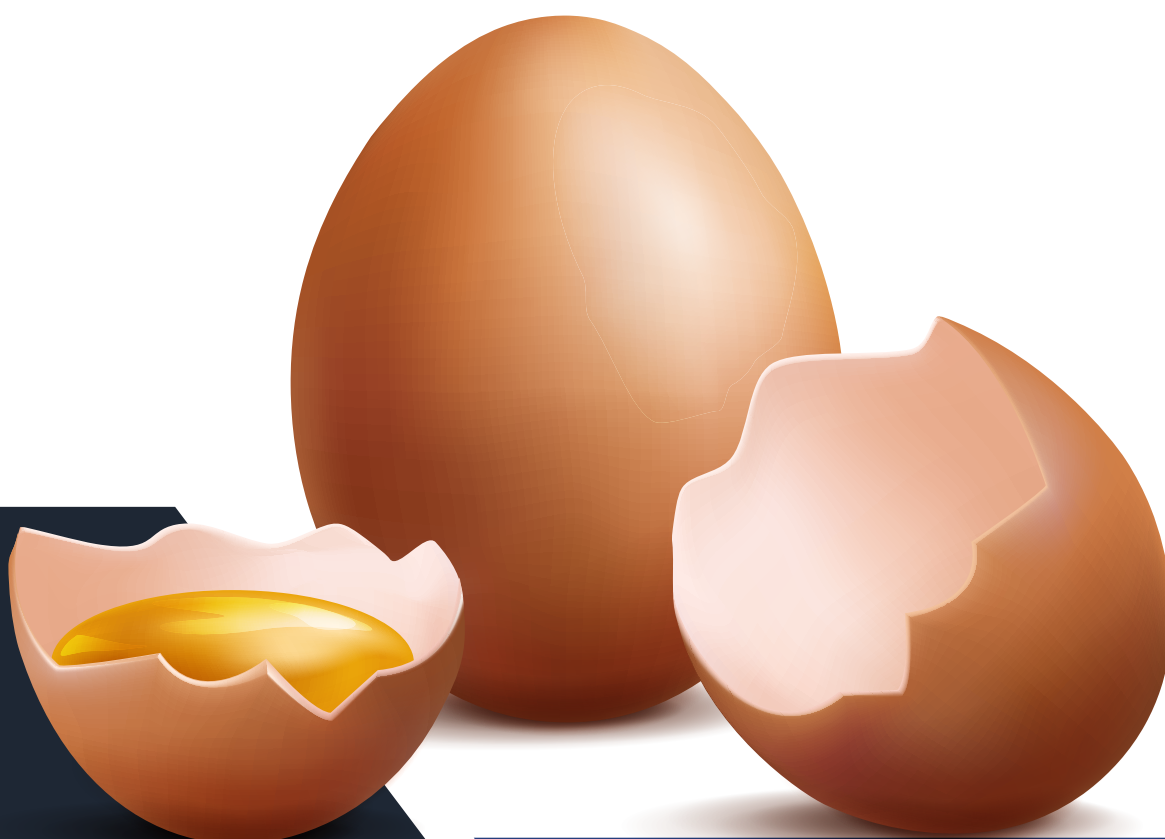
NFS SHELL POWER

It is a feed additive formulated for poultry.

By increasing the quality of the egg shell; It provides a serious reduction in the rates of cracked, dirty and broken eggs.

By supporting bone development, it minimizes leg and skeletal problems such as osteoporosis, cage fatigue and disproportionate growth.

Contents			
(In 1KG)			
Vitamin D3	Cholecalciferol (500 IU)	4000000	IU
Vitamin E	α -Tocopheryl Acetate %50	20000	Mg
Vitamin C	Ascorbic acid %100	100000	Mg
Organic Mangan	Glycine Chelated Mangan %22	40000	Mg
Organic Zinc	Glycine Chelated Zinc %26	40000	Mg
Organic Selenium	L-Selenemetonine %0,2	200	Mg
MCP	Mono Calcium Phosphate	200000	Mg
Carrier	Calcium Carbonate	QSP	





NFS SALMOKES

It is a feed additive formulated as a result of the combination of organic acids with herbal extracts.

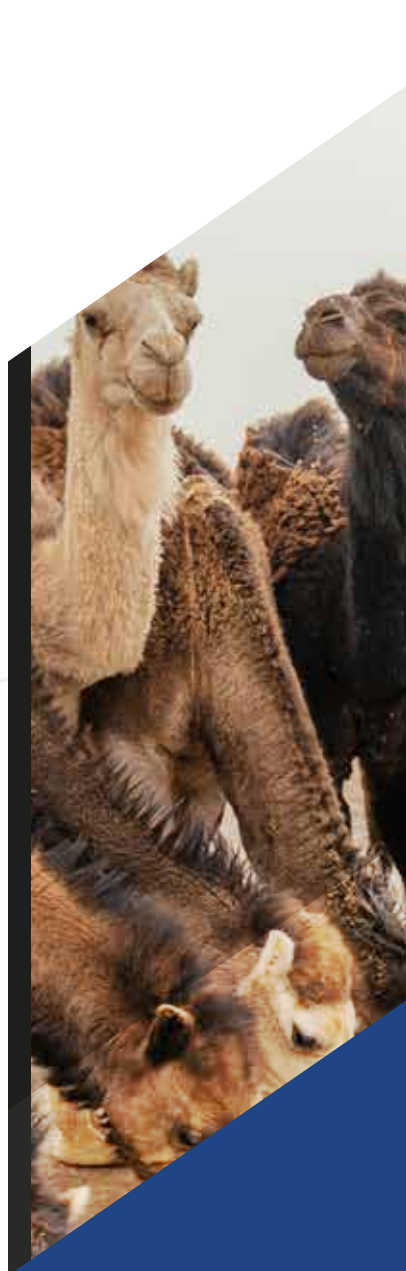
It prevents the proliferation of pathogens by regulating the pH and micro flora of the digestive system of all poultry.

NFSSALMOKES, whose effect lasts for a long time, does not affect the development of beneficial bacteria in the digestive system and helps to provide microbial control.

Since it does not change the taste of the feed, it does not affect the feed consumption negatively.

Contents		
		(In 1KG)
CALCIUM FORMATE	200.000	Mg
CALCIUM PROPIONATE	50.000	Mg
CITRIC ACID	30.000	Mg
ASETIC ACID	8.000	Mg
AMONYUM FORMATE	50.000	Mg
AMONYUM PROPIONATE	20.000	Mg





Seafood Horse Camel Pet



NFS AQUA VM

It is a feed additive with high bioavailability specially formulated for fish.

It accelerates the development of young fish and contributes to their healthy growth.

It increases the breeding efficiency in adult fish, increases body resistance, reduces stress, provides brighter and more vivid colors.

In addition to its use in order to meet the vitamin and mineral requirements of fish, it is also preferred to accelerate the adaptation to the environment.

Contents			
			(In 5KG)
Vitamin A	Retnlyl Acetate (1000 IU)	20000000	IU
Vitamin D3	Cholecalciferol (500 IU)	4000000	IU
Vitamin E	α-Tocopheryl Acetate %50	200000	Mg
Vitamin C	Ascorbic acid %100	150000	Mg
Vitamin K3	Menadione Sodium Bisulphite %51	1,2	Mg
Vitamin B1	Thiamine %100	10	Mg
Vitamin B2	Riboflavin %80	30	Mg
Vitamin B6	Pyridoxine %100	19	Mg
Vitamin B12	Cyanocobalamin %1	1	Mg
Vitamin B3	Niacinamide %100	200	Mg
Vitamin B5	Calcium-D-pantothenate %98	50	Mg
Vitamin B9	Folic Acid	5	Mg
Vitamin B7	Biotin %2	400	Mg
Choline	Choline chloride %60	400000	Mg
Mangan	Mangan Oxide %62	30000	Mg
Ferrous	Ferrous Sulphate %31	40000	Mg
Zinc	Zinc Oxide %72	40000	Mg
Copper	Copper Sulphate %25	4000	Mg
Iodate	Calcium Iodate %62	5000	Mg
Cobalt	Cobalt Carbonate %5	0,2	Mg
Selenium	Sodium Selenite %4,5	0,2	Mg
Methionine	DL Methionine	100000	Mg
Lysine	L Lysine HCL	100	Mg
MCP	Mono Calcium Phosphate	18000	Mg
Antioxidant	Butylated Hydroxytoluene	125000	Mg
Carrier	Calcium Carbonate	QSP	





NFS CAMEL VM

Formulated to meet the body requirements of camels.

Thanks to the high content of vitamins, minerals, live yeast, antioxidants, slow-release amino acids, herbal extracts and technological additives; It supports muscle and bone development, strengthens the immune system, improves the digestion of feed, improves reproductive performance, reduces heat stress, prevents toenail problems and contributes to the protection of the liver.

Contents			
			(In 15KG)
Vitamin A	Retnvl Acetate (1000 IU)	800000	IU
Vitamin D3	Cholecalciferol (500 IU)	58000	IU
Vitamin E	α-Tocopheryl Acetate %50	3750	Mg
Vitamin K3	Menadione Sodium Bisulphite %51	500	Mg
Vitamin B1	Thiamine %100	2500	Mg
Vitamin B2	Riboflavin %80	250	Mg
Vitamin B6	Pyridoxine %100	2000	Mg
Vitamin B12	Cyanocobalamin %1	15	Mg
Vitamin B3	Niacinamide %100	2500	Mg
Vitamin B5	Calcium-D-pantothenate %98	1500	Mg
Vitamin B9	Folic Acid	2	Mg
Vitamin B7	Biotin %2	2	Mg
Choline	Choline chloride %60	10000	Mg
Sodyum Chloride		1550	Mg
Mangan	Mangan Oxide %62	1250	Mg
Zinc	Zinc Oxide %72	1200	Mg
Copper	Copper Sulphate %25	1500	Mg
Iodate	Calcium Iodate %62	8	Mg
Selenium	Sodium Selenite %4,5	500	Mg
Methionine	DL Methionine	7500	Mg
Hyaluronic Acid		50	Mg
L-Carnitine		30	Mg
Lysine	L Lysine HCL	4000	Mg
Threonine		3050	Mg
Herbal Extract	NefeSily M.	2000	Mg
Live Yeast	Saccharomyces Cerevisiae	5x10 ¹⁰	Cfu
Inactive Yeast	Inactive Yeast	5000	Mg
Soda	Sodium Bicarbonate	1250	Mg
Magnesium	Magnesium Oxide	650	Mg
Binder	Nfs UltraTox	5000	Mg
Carrier	Calcium Carbonate	QSP	



NFS HORSE POWER

Specially formulated for horses. In addition to vitamin and mineral requirements, it contains highly chelated minerals, amino acids, vitamin C and B group vitamins, organic calcium, enzymes, antioxidants, Omega fatty acids, glucosamine, MSM, coenzyme, prebiotics and probiotics.

It makes the muscle and bone system stronger, reduces digestive problems, regulates stomach pH, increases body resistance, increases white blood cells, minimizes toenail problems, makes hair look brighter and livelier.

Contents			
			(In 2KG)
Vitamin A	Retnynl Acetate (1000 IU)	3000000	IU
Vitamin D3	Cholecalciferol (500 IU)	500000	IU
Vitamin E	α-Tocopheryl Acetate %50	50000	Mg
Vitamin C	Ascorbic acid %100	75000	Mg
Vitamin K3	Menadione Sodium Bisulphite %51	600	Mg
Vitamin B1	Thiamine %100	2000	Mg
Vitamin B2	Riboflavin %80	2500	Mg
Vitamin B6	Pyridoxine %100	1500	Mg
Vitamin B12	Cyanocobalamin %1	20	Mg
Vitamin B3	Niacinamide %100	5000	Mg
Vitamin B5	Calcium-D-pantothenate %98	2500	Mg
Vitamin B9	Folic Acid	1000	Mg
Vitamin B7	Biotin %2	50	Mg
Choline	Choline chloride %60	60000	Mg
Mangan	Mangan Oxide %62	25000	Mg
Ferrous	Ferrous Sulphate %31	25000	Mg
Zinc	Zinc Oxide %72	30000	Mg
Copper	Copper Sulphate %25	7500	Mg
Iodate	Calcium Iodate %62	100	Mg
Cobalt	Cobalt Carbonate %5	100	Mg
Selenium	Sodium Selenite %4,5	100	Mg
MCP	Mono Calcium Phosphate	32000	Mg
Antioxidant	Butylated Hydroxytoluene	300	Mg
Sulfur		5000	Mg
Magnesium	Magnesium Oxide	500000	Mg
Carrier	Calcium Carbonate	QSP	



NFS PETSON VM

It is a vitamin mineral premix produced for cats and dogs.

It contains high levels of amino acids, zinc, biotin, folic acid, vitamin B5, calcium, magnesium and antioxidants.

It strengthens the connective tissue around the joint and cartilage and ensures that the musculoskeletal systems are healthier.

It increases body resistance, provides protection against stress, reduces hair loss, makes hair look brighter and more lively.





QUALITY PRODUCT

QUALITY SERVICE







FEED AND FEED ADDITIVES

Fevzi Cakmak Mh. 10576. Sk No:13G 42050
Karatay/Konya/Turkiye